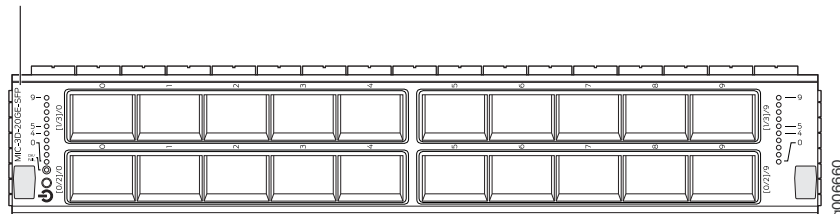


Gigabit Ethernet MIC with SFP

Figure 10: 20-Port Gigabit Ethernet MIC with SFP

MIC-3D-20GE-SFP



Software release	<ul style="list-style-type: none"> Junos 10.1 and later <p>For information on which MPCs support this MIC, see "MIC/MPC Compatibility" on page 26. For information on which MICs are supported on MX Series routers, see "MICs Supported by MX Series Routers" on page 18.</p>
Description	<ul style="list-style-type: none"> 20 Gigabit Ethernet ports Power requirement: 0.77 A @ 48 V (37 W) Weight: 1.2 lb (0.54 kg) Model number: MIC-3D-20GE-SFP Name in the CLI: 3D 20GE SFP
Hardware features	<ul style="list-style-type: none"> High-performance throughput on each port at speeds up to 1 Gbps Autonegotiation between Gigabit Ethernet circuit partners Up to 20-Gbps of full-duplex traffic Maximum transmission units (MTUs) of up to 9192 bytes
Software features	<ul style="list-style-type: none"> Optical diagnostics and related alarms Virtual Router Redundancy Protocol (VRRP) support IEEE 802.1Q virtual LANs (VLANs) support Remote monitoring (RMON) EtherStats Source MAC learning MAC accounting and policing—Dynamic local address learning of source MAC addresses Flexible Ethernet encapsulation Multiple tag protocol identifiers (TPID)
Interfaces	<p>Syntax: <i>ge-fpc/pic/port</i> where:</p> <ul style="list-style-type: none"> fpc: Slot in the router where the MPC is installed pic: The logical PIC number on the MIC, numbered 0, 1, 2, and 3. port: 0 through 9 <p>For example, <i>ge-3/3/0</i> is the interface for port 0 in PIC 3 on the MPC installed in slot 3.</p> <p>Figure 11 on page 148, Figure 12 on page 149, and Figure 13 on page 149 show examples of the port numbering for the Gigabit Ethernet MIC with SFP installed in an MX960, MX480, and MX240, respectively.</p>

Cables and connectors **TIP:** You can use the [Hardware Compatibility Tool](#) to find information about the pluggable transceivers supported on your Juniper Networks device.

The list of supported transceivers for the MX Series is located at <https://pathfinder.juniper.net/hct/category/#catKey=100001&modelType;=All&pf;=MX+Series>.

- LEDs
- OK/FAIL LED, one bicolor:**
- Green—MIC is functioning normally.
 - Red—MIC has failed.
- Link LED, one green per port:**
- Off—No link.
 - On steadily—Link is up.

Port Numbering

Figure 11 on page 148, Figure 12 on page 149, and Figure 13 on page 149 show examples of the port numbering for the Gigabit Ethernet MIC with SFP on the MX960, MX480, and MX240, respectively.

Figure 11: Port Numbering for the Gigabit Ethernet MIC with SFP (MX960)

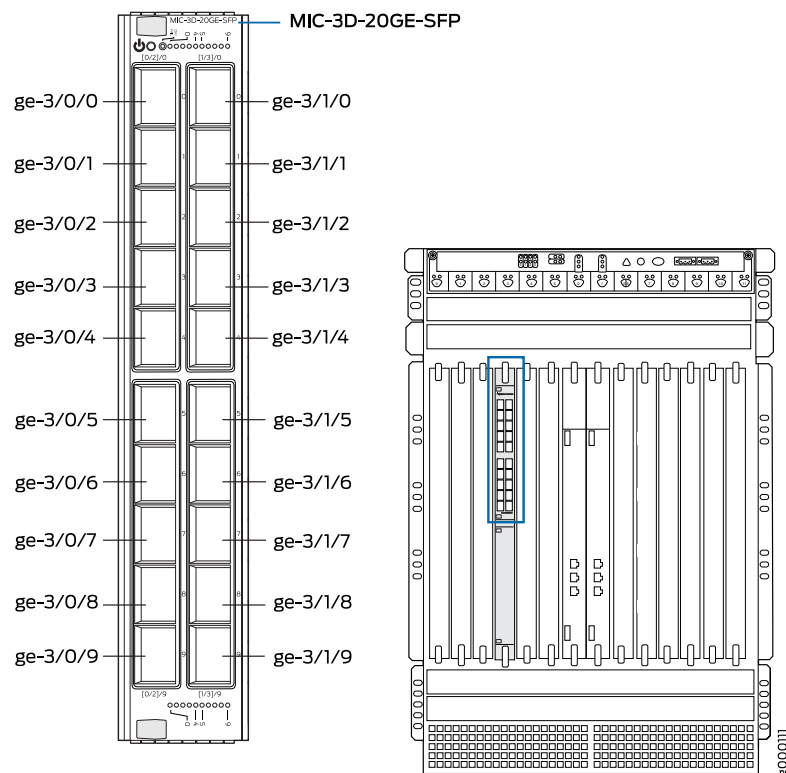
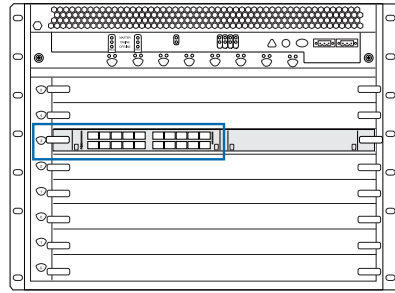


Figure 12: Port Numbering for the Gigabit Ethernet MIC with SFP (MX480)



MIC-3D-20GE-SFP

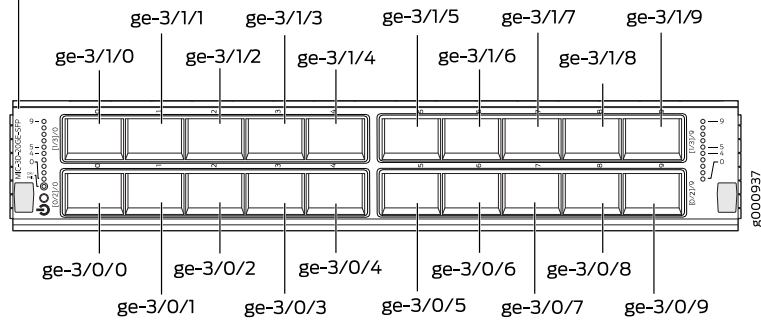
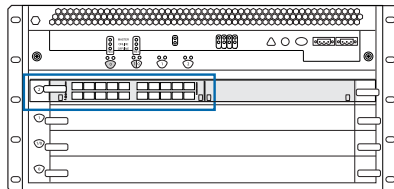


Figure 13: Port Numbering for Gigabit Ethernet MIC with SFP (MX240)



MIC-3D-20GE-SFP

